

TYPE 801 and 802

Pressure switch
Normally closed contact (Type 801)
Normally open contact (Type 802)

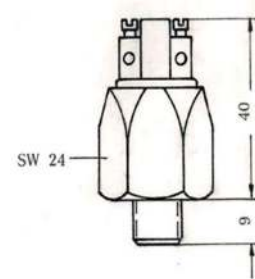
Screw connection
Width across flats 24
Height 40mm
Thread length 9mm



A Kant pressure switch Type 801 and 802 has an integrated N.C. / N.O. contact. When pressure is applied, a diaphragm is deformed or a piston is displaced via a lifting movement. The deformation or movement depends on an adjustable spring preload. When the switching point is reached, the diaphragm or piston has undergone a defined movement which actuates the switch and opens or closes the electrical circuit. Specific pressure values can be monitored via the switching signal.

	ADJUSTMENT RANGE [mbar]	OVERPRESSURE SAFETY	ORDER NUMBER	
			NC CONTACT	NO CONTACT
DIAPHRAGM	0,2 – 1	300 bar	801-1-ABC	802-1-ABC
	1 – 10		801-10-ABC	802-10-ABC
	2 – 20		801-20-ABC	802-20-ABC
	10 – 100	600 bar	801-100-ABC	802-100-ABC
	20 – 200		801-200-ABC	802-200-ABC
PISTON	10 – 100	600 bar	801-100-ABC	802-100-ABC
	20 – 200		801-200-ABC	802-200-ABC

REPRODUCIBILITY	5-10%	ELECTRICITY MAX.	2 Amp.
HYSTERESIS	~ 5%	TYPE OF PROTECTION	IP 55
SWITCHING ELEMENT	NC Contact 801 NO Contact 802	PERMISSIBLE TEMP.	-20° to +100° C
SWITCHING FREQUENCY	200/min	WEIGHT	0,09 kg
VOLTAGE	250 Volt		



Optionally with:
Protective cap PG7
Protective cap PG7 -IP65
Protective cap PG9
Protective cap PG9 -IP65
Protective rubber cap

A Thread

	A
G 1/8	1
G 1/4	2
M 10X1 CYLINDRICAL	3
NPT 1/8	4
R 1/8 TAPERED	5
M 10X1 TAPERED	6
M 12	7
M 12X1,5	8
NPT 1/4	9

B Sealing element

	B	APPLICATION
DIAPHRAGM	NBR	1 Hydraulic oil, Machine oil, Heating oil, Nitrogen, sea water
	FKM (VITON)	2 Hydraulic fluids, Petrol, Alcohol, Salt and Sulphuric acid
	EPDM (APTK)	3 Hydrogen, Brake fluid, Acetylene, etc.
	SILICONE	4 Food, Water etc.
PISTON	PISTON SEALING	8 Oil
	PISTON SEALING	9 Hot water

C Body material

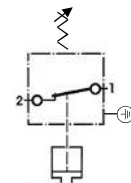
	C
STEEL GAL ZN 5	1
VA 1.4305	2
BRASS 60	3
VA 1.4571	8

D Customized version

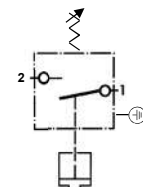
	D
MICROSWITCH WITH GOLD PLATED CONTACTS	5

The Open, Close or Change function refers to increasing pressure.

CONNECTION 801:



CONNECTION 802:



➔ Order Number Example:

ABCD
801-XX-2115

- Customized version
- Material
- Sealing element
- Thread
- Setting range
- Type